

# City of Irvine

## Community Workshops

May 27, 2023

Dr. Justin Levitt  
National Demographics Corporation

# Introductions

---

# Today's Goals

---

*You* Learn from the Experts

Experts Listen to *You*

Mapping Tools Overview

You Leave Empowered to Give Effective Feedback

# Why You Should Care

---

- Democracy works better when people are engaged
- You are the experts on your community
- You are the experts on your neighborhood
- The districts determined in this process will be around until 2031

# Today's Schedule

---

**10 - 11:30 p.m.**

**Process, Rules and Goals**

**Mapping Tools**

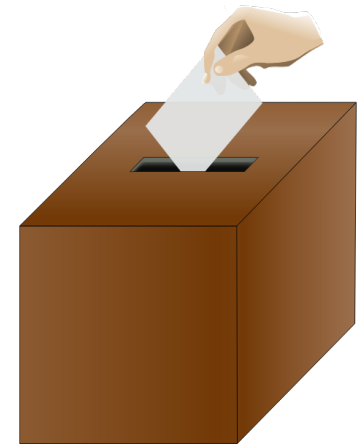
**Neighborhoods / Communities of Interest**

**Next Steps**

# Proposed Charter Reforms

---

- The Council is placing a Charter amendment on the March 2024 ballot that would:
  - Increase the size of the City Council from five members to seven
  - Six of the seven seats would be elected “by district”
  - The Mayor would continue to be elected at-large



# Election Systems

---

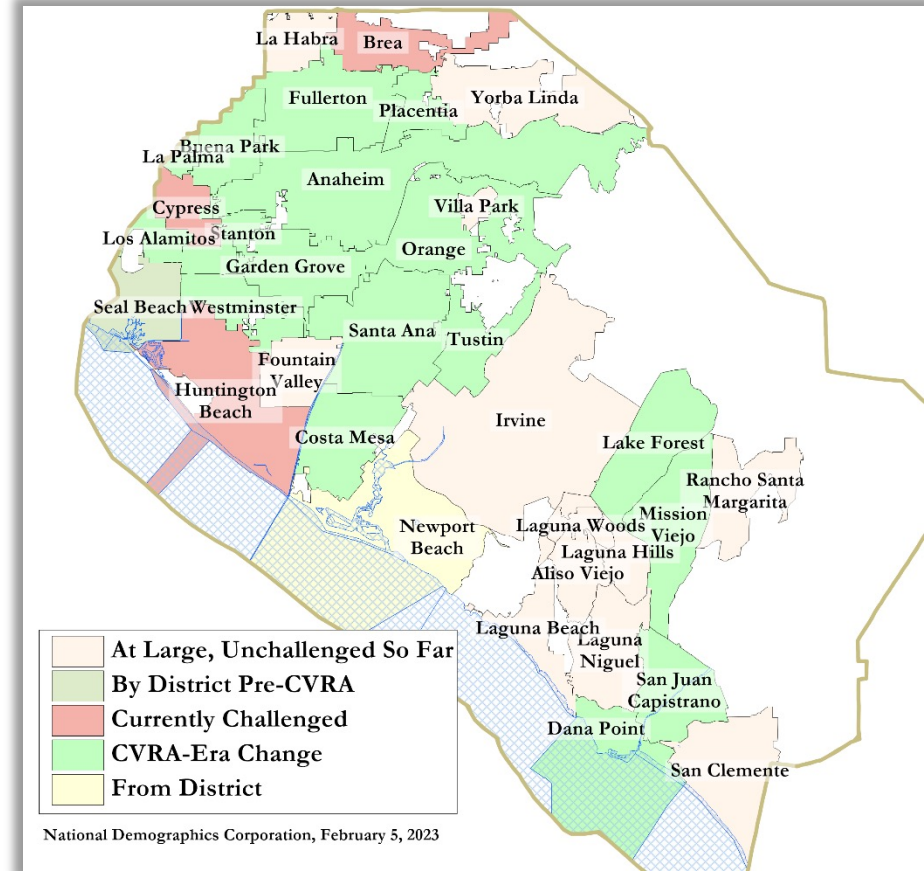
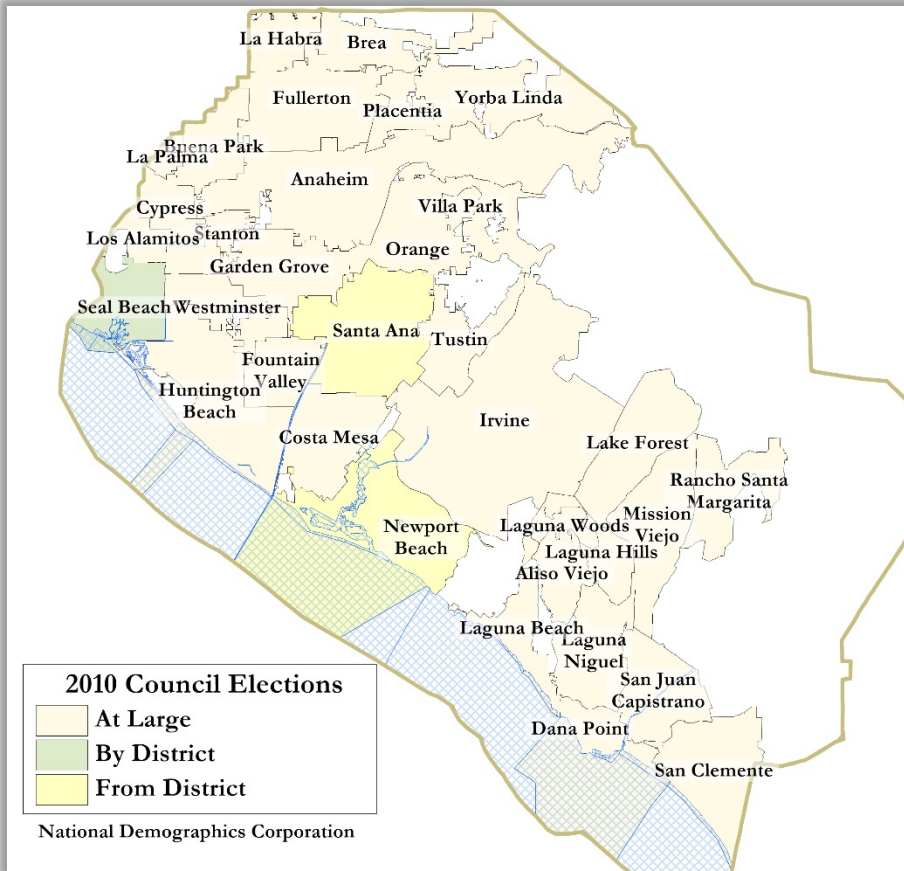
1. “At Large”
2. “From District” or “Residence” Districts
  - ▣ *Very rare; subject to CVRA challenge*
3. “By District”



# By-District Elections

2010

2023



Statewide switched since 2002:  
 At least 275 school districts, 36  
 Community College Districts, 177 cities,  
 1 County, and 53 special districts.



# Districting Process Overview

Step	Description
<b>Two Initial Hearings</b> April 11 & May 9	Held prior to release of draft maps. Education and to solicit input on the composition of districts.
<b>First round of Workshops</b> April 15 – May 27	Held throughout the community prior to release of draft maps. Education and to solicit input on the composition of districts.
<b>Map Submission deadline</b> June 29	Deadline for public map submissions to ensure the map can be presented and discussed at the third public hearing.
<b>Release draft maps</b> July 4	Maps must be posted at least 7 days prior to 3 <sup>rd</sup> hearing.
<b>Two hearings on draft maps</b> July 11 & Sept 12	Two meetings to discuss and revise the draft maps and to discuss the election sequence.
<b>Second round of Workshops</b> July – September	Additional workshops held throughout the city to discuss the draft maps.
<b>Map selection</b> October 10	Map adopted either before or after vote on charter change. Final map must be posted at least 7 days prior to adoption.
<b>Charter Vote</b> Citywide vote in March 2024	Charter changes put to the voters in the statewide March primary.
<b>First By-District Election</b> November 2024	First by-district Council elections held.

# Workshops – First Round

Date & Time	Location
Saturday, April 15 10 am	City Council Chamber, 1 Civic Center Plaza
Saturday, April 15 2 pm	Great Park Artist Studio, 8000 Great Park Blvd
Saturday, April 22 10 am	Quail Hill Community Center, 39 Shady Canyon Dr
Saturday, April 22 2 pm	Heritage Park Library, 14361 Yale Ave
Wednesday, April 26 6 pm	Virtual forum over Zoom
Saturday, May 13 3 pm	South Coast Chinese Cultural Center, 9 Truman St
Saturday, May 27 10 am	Lakeview Senior Center, 20 Lake Rd

# Workshops – Second Round

Date & Time	Location
Wednesday, July 11 6 pm	Virtual
Saturday, August 5 10 am	Quail Hill Community Center, 39 Shady Canyon Dr
Saturday, August 5 2 pm	South Coast Chinese Cultural Center, 9 Truman St
Saturday, August 26 10 am	Lakeview Senior Center, 20 Lake Rd
Saturday, August 26 2 pm	Heritage Park Library, 14361 Yale Ave
Saturday, September 23 10 am	Great Park Artist Studio, 8000 Great Park Blvd
Saturday, September 23 2 pm	City Council Chamber, 1 Civic Center Plaza

# Districting Rules and Goals

## 1. Federal Laws

**Equal Population**  
**Federal Voting Rights Act**  
**No Racial Gerrymandering**



## 2. California Criteria for Cities

1. **Geographically contiguous**
2. **Undivided neighborhoods and “communities of interest”**  
(Socio-economic geographic areas that should be kept together)
3. **Easily identifiable boundaries**
4. **Compact**  
(Do not bypass one group of people to get to a more distant group of people)

### **Prohibited:**

“Shall not favor or discriminate against a political party.”

## 3. Other Traditional Districting Principles

**Respect voters’ choices / continuity in office**  
**Future population growth**

# Demographic Summary

Each of **six** districts would contain about 51,326 people.

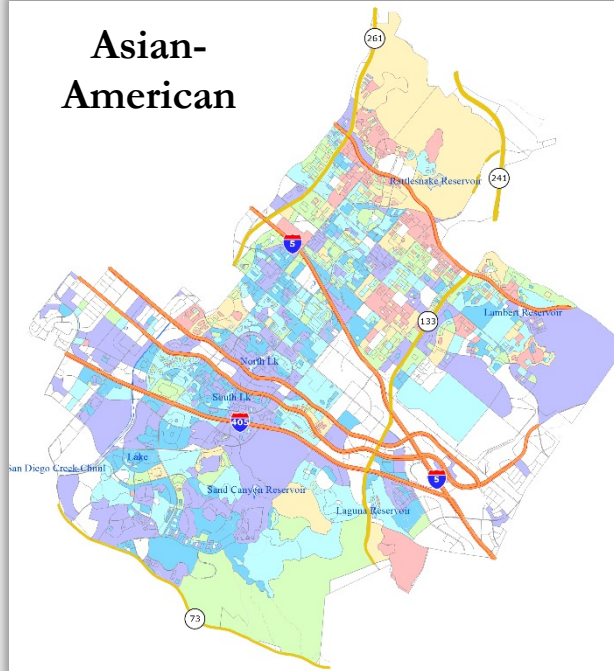
Category	Field	Total	Category	Field	Total
2020 Census	Total Population	307,958	Age	age0-19	26%
Total Pop.	Hispanic/Latino	12%		age20-60	59%
	NH White	34%		age60plus	14%
	NH Black	3%	Immigration	immigrants	39%
	NH Asian/Pac.Isl.	50%		naturalized	51%
	NH Native Amer.	0%	Language spoken at home	english	51%
Citizen Voting Age Pop	Total	166,406		spanish	7%
	Hisp	12%		asian-lang	29%
	NH White	47%		other lang	14%
	NH Black	2%	Language Fluency	Speaks Eng. "Less than Very Well"	16%
	Asian/Pac.Isl.	38%		Education (among those age 25+)	hs-grad
Native Amer.	1%	bachelor	38%		
Voter Registration (Nov 2020)	Total	148,676	graduatedegree		30%
	Latino est.	10%	Child in Household	child-under18	34%
	Spanish-Surnamed	9%	Pct of Pop. Age 16+	employed	66%
	Asian-Surnamed	27%		Household Income	income 0-25k
	Filipino-Surnamed	2%	income 25-50k		9%
	NH White est.	55%	income 50-75k		11%
	NH Black	2%	income 75-200k		42%
Voter Turnout (Nov 2020)	Total	127,745	income 200k-plus		24%
	Latino est.	10%	Housing Stats	single family	57%
	Spanish-Surnamed	9%		multi-family	43%
	Asian-Surnamed	26%		rented	56%
	Filipino-Surnamed	2%		owned	44%
	NH White est.	56%	Total population data from California's adjusted 2020 Census data. Citizen Voting Age Population, Age, Immigration, and other demographics from the 2017-2021 American Community Survey and 2016-2020 Special Tabulation 5-year data. Turnout and Registration data from California Statewide Database. "Latino" figures calculated by NDC using Census Bureau's Latino undercount by surname estimate.		
	NH Black	2%			
Voter Turnout (Nov 2018)	Total	85,460			
	Latino est.	10%			
	Spanish-Surnamed	9%			
	Asian-Surnamed	22%			
	Filipino-Surnamed	1%			
NH White est.	61%				
NH Black est.	2%				

# Protected Class CVAP

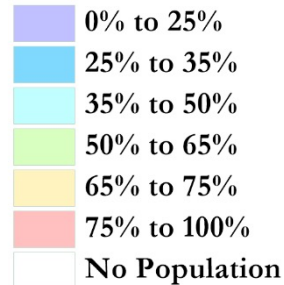
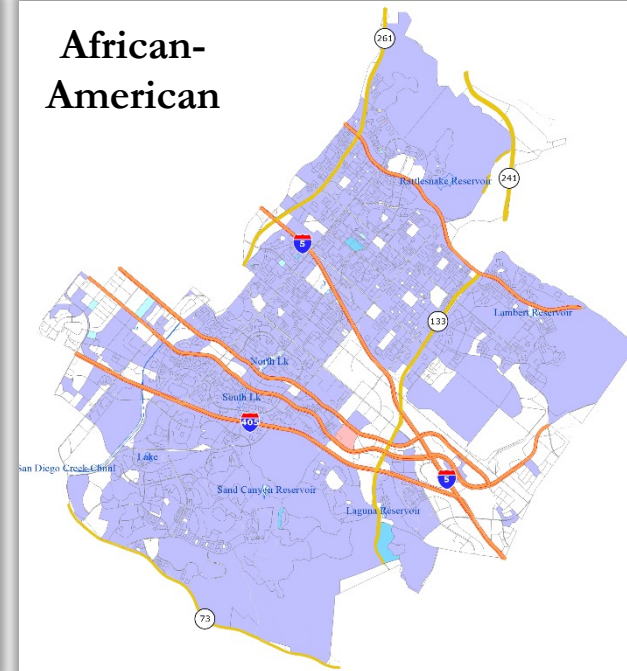
Latino



Asian-American



African-American





# Defining Neighborhoods

---

**1<sup>st</sup> Question: What is your neighborhood?**

**2<sup>nd</sup> Question: What are its geographic boundaries?**

**Examples of physical features defining a neighborhood boundary:**

- ❑ Natural neighborhood dividing lines, such as highway or major roads, rivers, canals and/or hills
- ❑ Areas around parks or schools
- ❑ Other neighborhood landmarks

**In the absence of public testimony, planning records and other similar documents may provide definition.**



# Beyond Neighborhoods: Defining Communities of Interest

---

## 1<sup>st</sup> Question: What defines your community?

- ❑ Geographic Area, plus
- ❑ Shared issue or characteristic
  - ❑ Shared social or economic interest
  - ❑ Impacted by city policies
- ❑ Tell us “your community’s story”

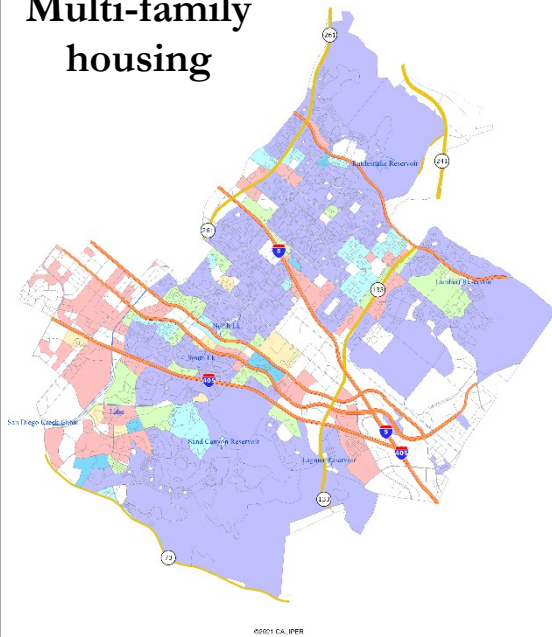
## 2<sup>nd</sup> Question: Would this community benefit from being “included within a single district for purposes of its effective and fair representation”?

- ❑ Or would it benefit more from having multiple representatives?

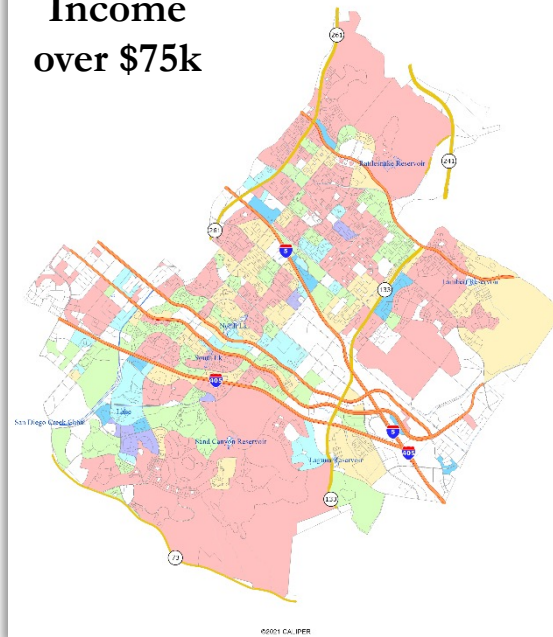
Definitions of Communities of Interest may not include relationships with political parties, incumbents, or political candidates.

# Demographics and communities

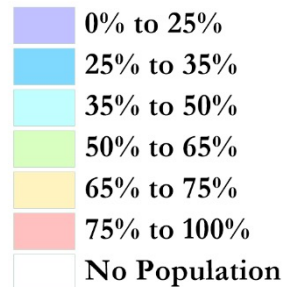
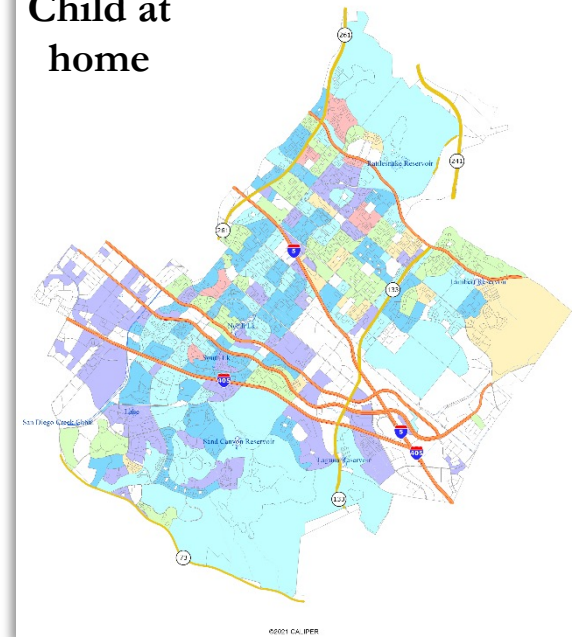
### Multi-family housing



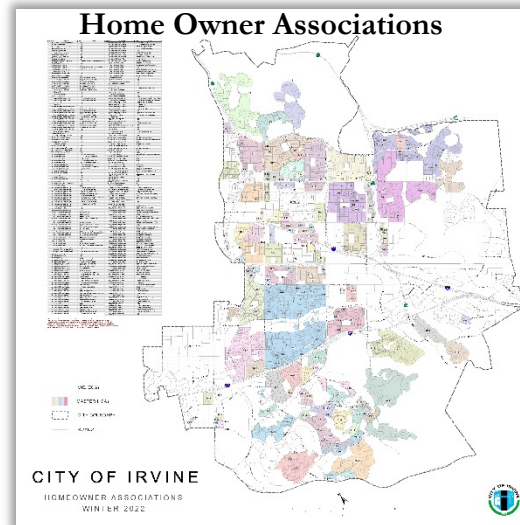
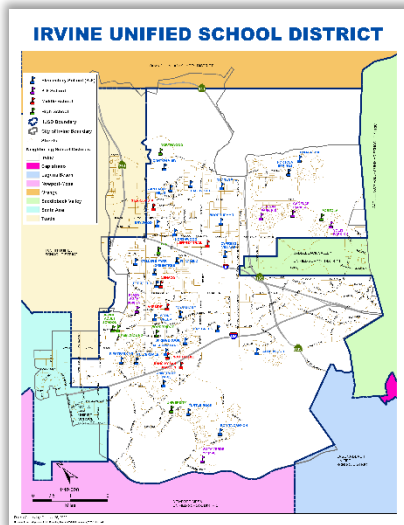
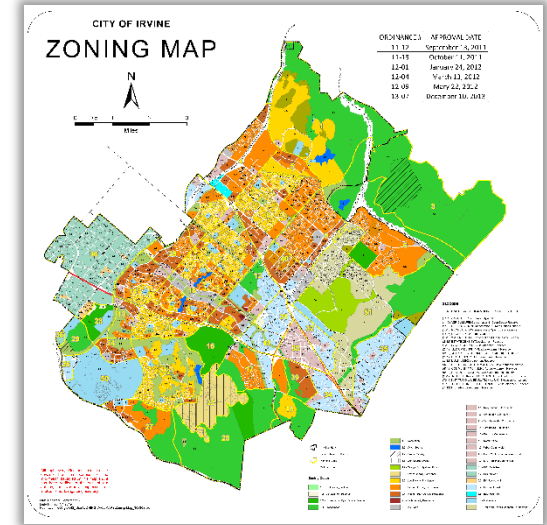
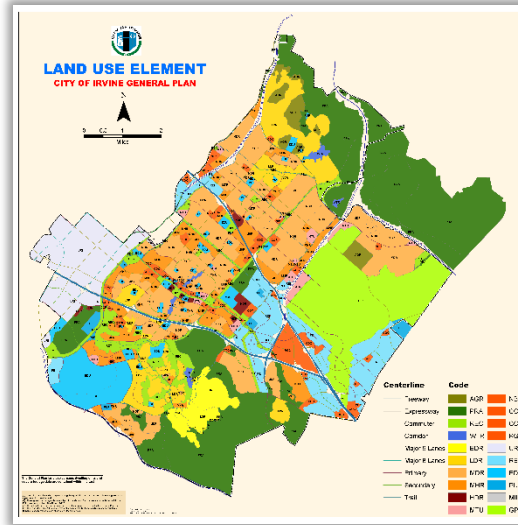
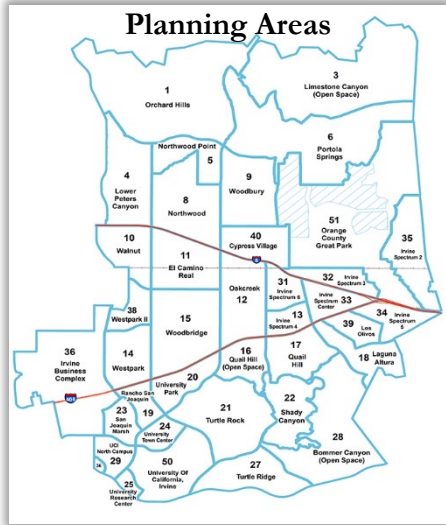
### Income over \$75k



### Child at home

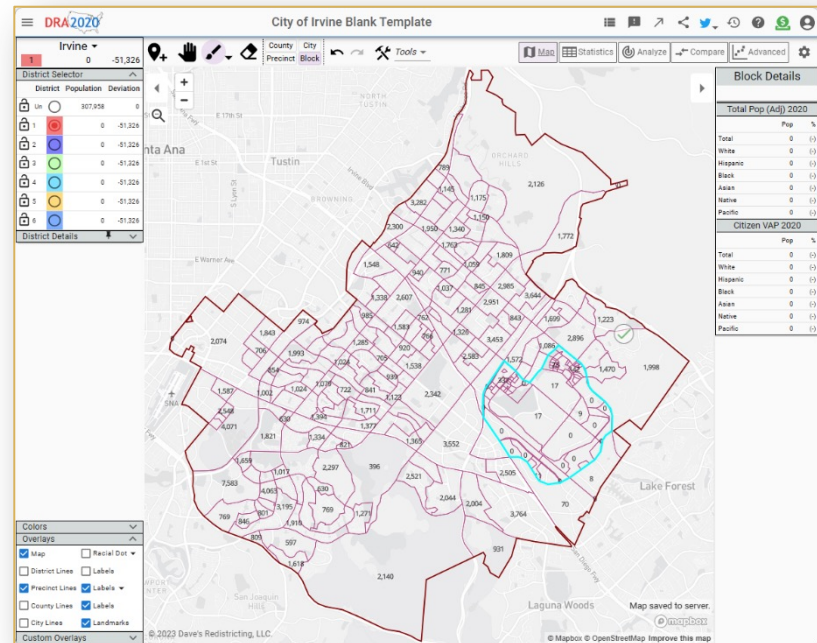
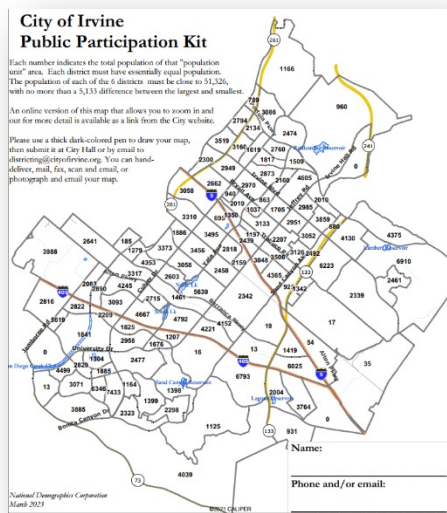


# Possible Neighborhoods / Communities



# Public Mapping and Map Review Tools

- ❑ Different tools for different purposes
- ❑ Different tools for different levels of technical skill and interest
  - ❑ Simple “review draft maps” tool
  - ❑ Paper-based simple “Draw a draft map” tools
  - ❑ Powerful, data-rich “Draw a draft map” online tool

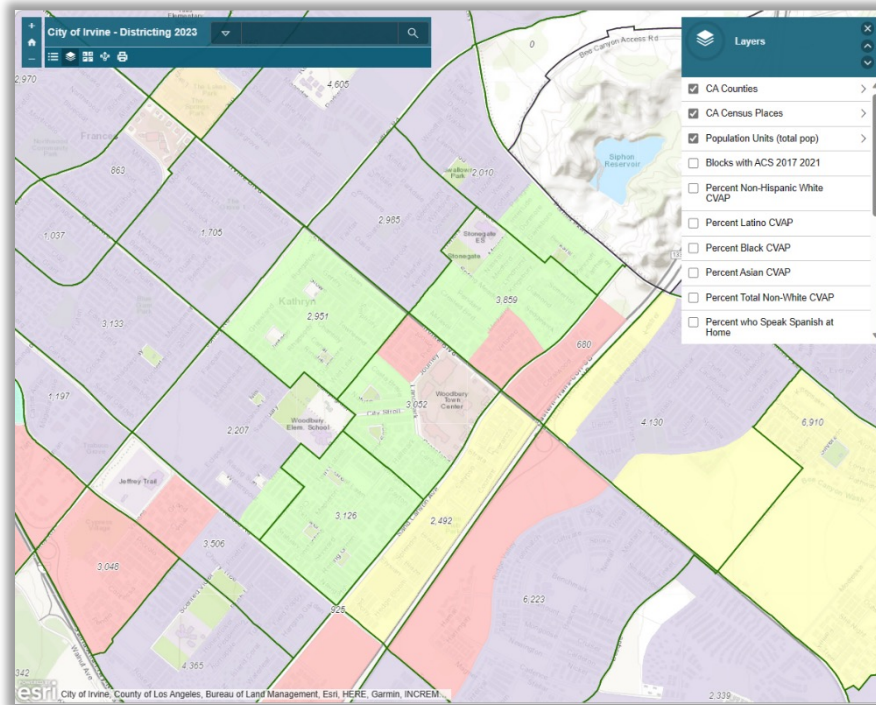




# Simple Viewing Tool

## Very similar to Google Maps:

- ❑ Zoom in and out, or enter an address to see which district it is in
- ❑ Choose which overlays you wish to add (if any)
- ❑ Maps will be posted here when available





# Simple Map Drawing Tool

## Paper “Public Participation Kit”

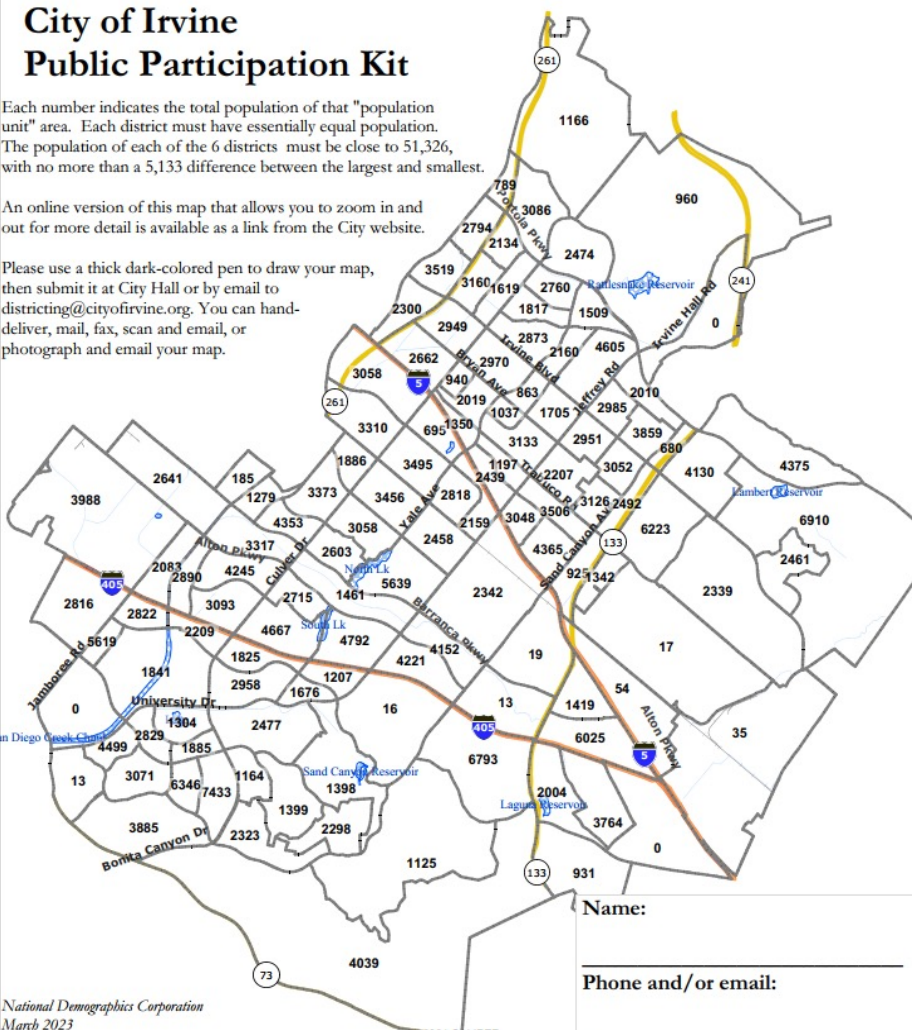
- ❑ For those without internet access or who prefer paper
- ❑ Total Population Counts only – no demographic numbers

**City of Irvine**  
**Public Participation Kit**

Each number indicates the total population of that "population unit" area. Each district must have essentially equal population. The population of each of the 6 districts must be close to 51,326, with no more than a 5,133 difference between the largest and smallest.

An online version of this map that allows you to zoom in and out for more detail is available as a link from the City website.

Please use a thick dark-colored pen to draw your map, then submit it at City Hall or by email to [districting@cityofirvine.org](mailto:districting@cityofirvine.org). You can hand-deliver, mail, fax, scan and email, or photograph and email your map.



Name: \_\_\_\_\_

Phone and/or email: \_\_\_\_\_

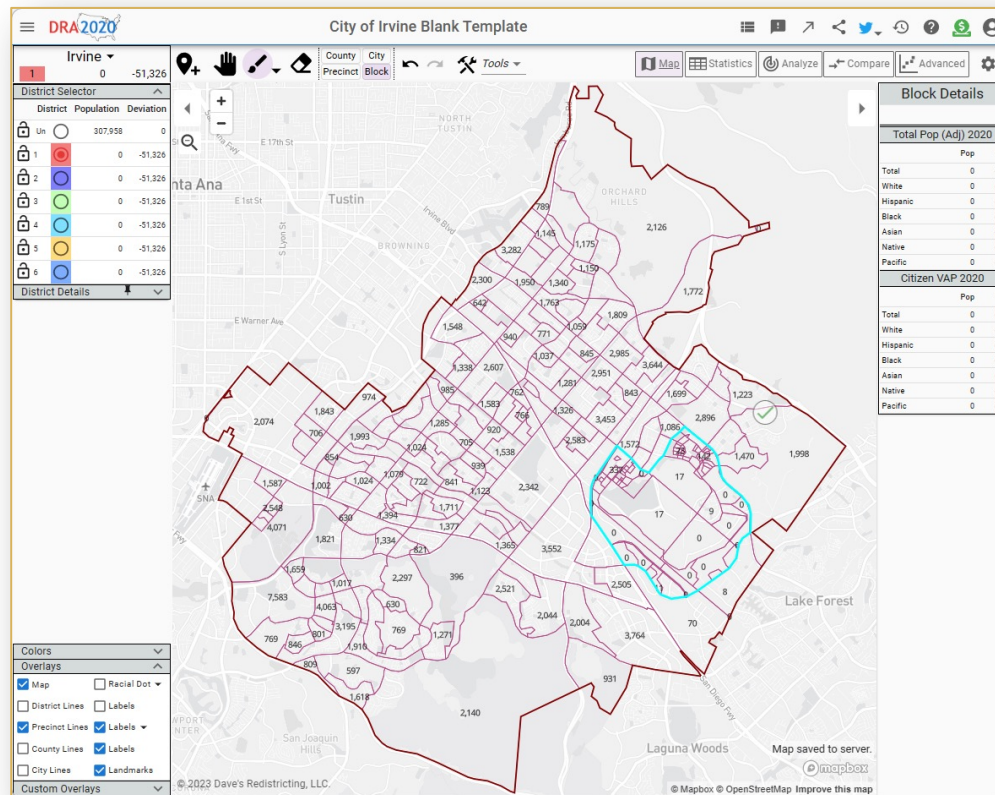
National Demographics Corporation  
March 2023

©2021 CALIPER

# Dave's Redistricting App (DRA)

## Draw Your Community of Interest or a Full District Map

- Also includes simple district-mapping tool
- Email a link to your map to the City



# Q&A With Your Hosts

---

# Your Turn – Communities of Interest

---

- ❑ Who is part of your community?
- ❑ What are some meaningful places your community recognizes or gathers at?
- ❑ What are some common concerns you share with a group?
- ❑ What are some common cultural characteristics that unite a community?
- ❑ What are common work-related traits that bring a community together?
- ❑ What is significant about the physical environment?
- ❑ What areas benefit from staying together in a district?

**Your thoughts will become part of the record.**

# Workshops – Second Round

Date & Time	Location
Wednesday, July 11 6 pm	Virtual
Saturday, August 5 10 am	Quail Hill Community Center, 39 Shady Canyon Dr
Saturday, August 5 2 pm	South Coast Chinese Cultural Center, 9 Truman St
Saturday, August 26 10 am	Lakeview Senior Center, 20 Lake Rd
Saturday, August 26 2 pm	Heritage Park Library, 14361 Yale Ave
Saturday, September 23 10 am	Great Park Artist Studio, 8000 Great Park Blvd
Saturday, September 23 2 pm	City Council Chamber, 1 Civic Center Plaza

# Share Your Thoughts

---

Website

[DrawIrvine.org](https://DrawIrvine.org)

Phone

949-724-7575

Email

[districting@cityofirvine.org](mailto:districting@cityofirvine.org)