

City of Irvine

Community Workshops

April 22, 2023

Dr. Justin Levitt
National Demographics Corporation

Introductions

Today's Goals

You Learn from the Experts

Experts Listen to *You*

Mapping Tools Overview

You Leave Empowered to Give Effective Feedback

Why You Should Care

- Democracy works better when people are engaged
- You are the experts on your community
- You are the expert on your neighborhood
- The districts determined in this process will be
around until 2031

Today's Schedule

10 - 11:30 a.m.

Process, Rules and Goals

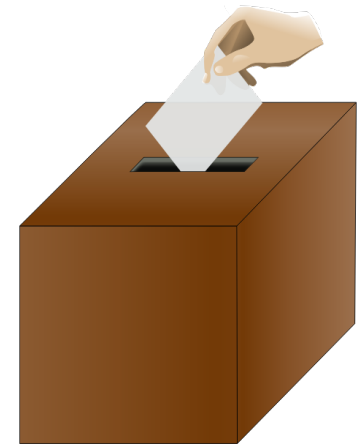
Mapping Tools

Neighborhoods / Communities of Interest

Next Steps

Proposed Charter Reforms

- The Council is placing a Charter amendment on the March 2024 ballot that would:
 - Increase the size of the City Council from five members to seven
 - Six of the seven seats would be elected “by district”
 - The Mayor would continue to be elected at-large



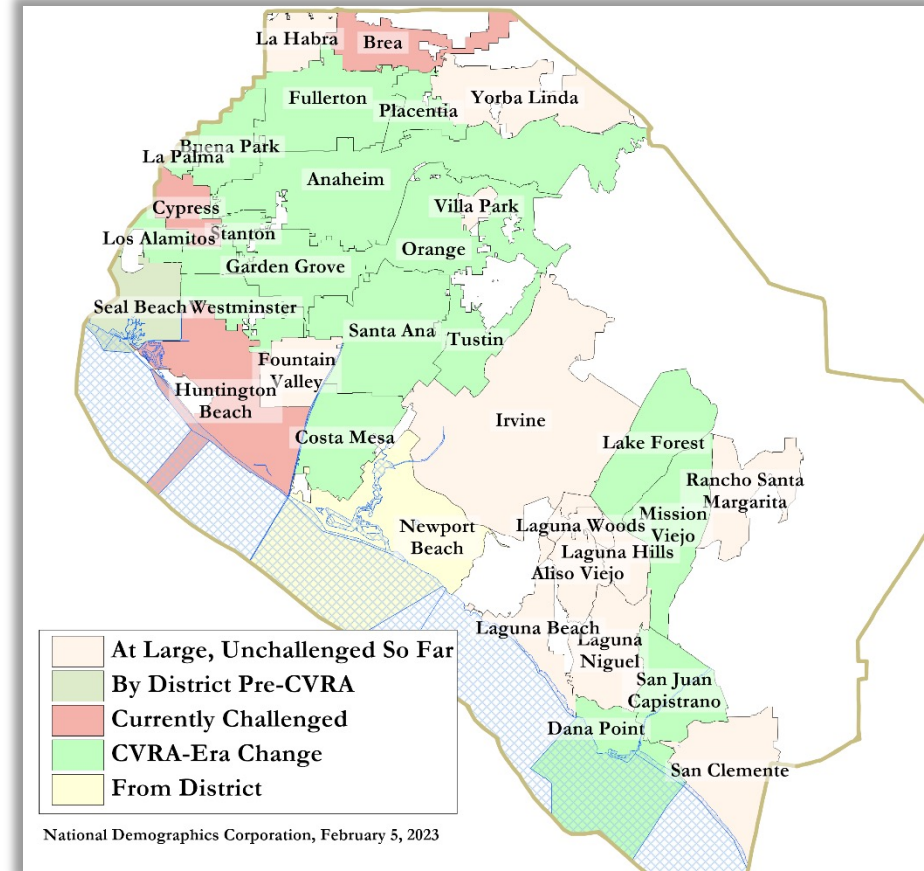
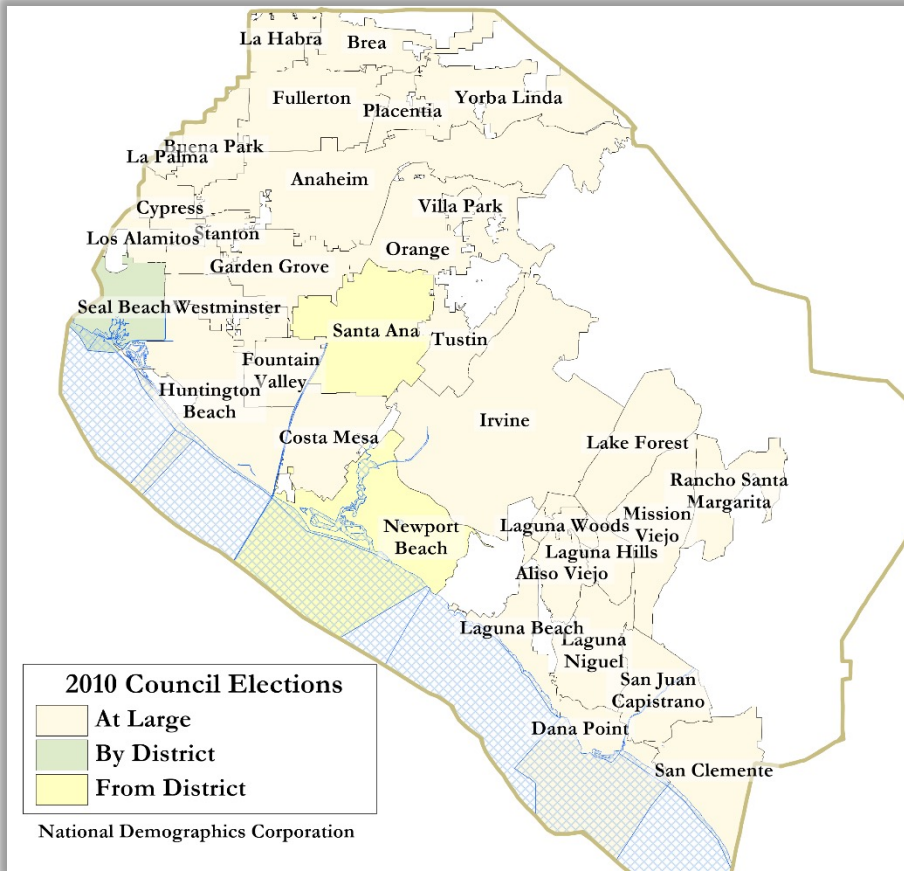
Election Systems

1. “At Large”
2. “From District” or “Residence” Districts
 - ▣ *Very rare; subject to CVRA challenge*
3. “By District”

By-District Elections

2010

2023



Statewide switched since 2002:
 At least 275 school districts, 36
 Community College Districts, 177 cities,
 1 County, and 53 special districts.



Districting Process Overview

Step	Description
Two Initial Hearings April 11 & May 9	Held prior to release of draft maps. Education and to solicit input on the composition of districts.
First round of Workshops April 15 – May 27	Held throughout the community prior to release of draft maps. Education and to solicit input on the composition of districts.
Map Submission deadline June 29	Deadline for public map submissions to ensure the map can be presented and discussed at the third public hearing.
Release draft maps July 4	Maps must be posted at least 7 days prior to 3 rd hearing.
Two hearings on draft maps July 11 & Sept 12	Two meetings to discuss and revise the draft maps and to discuss the election sequence.
Second round of Workshops July – September (TBA)	Additional workshops held throughout the city to discuss the draft maps.
Map selection October 10	Map adopted either before or after vote on charter change. Final map must be posted at least 7 days prior to adoption.
Charter Vote Citywide vote in March 2024	Charter changes put to the voters in the statewide March primary.
First By-District Election November 2024	First by-district Council elections held.



Workshops – First Round

Date & Time	Location
Saturday, April 15 10 am	City Council Chamber, 1 Civic Center Plaza
Saturday, April 15 2 pm	Great Park Artist Studio, 8000 Great Park Blvd
Saturday, April 22 10 am	Quail Hill Community Center, 39 Shady Canyon Dr
Saturday, April 22 2 pm	Heritage Park Library, 14361 Yale Ave
Wednesday, April 26 6 pm	Virtual forum over Zoom
Saturday, May 13 3 pm	South Coast Chinese Cultural Center, 9 Truman St
Saturday, May 27 10 am	Lakeview Senior Center, 20 Lake Rd

Districting Rules and Goals

1. Federal Laws

Equal Population
Federal Voting Rights Act
No Racial Gerrymandering



2. California Criteria for Cities

1. **Geographically contiguous**
2. **Undivided neighborhoods and “communities of interest”**
(Socio-economic geographic areas that should be kept together)
3. **Easily identifiable boundaries**
4. **Compact**
(Do not bypass one group of people to get to a more distant group of people)

Prohibited:

“Shall not favor or discriminate against a political party.”

3. Other Traditional Districting Principles

Respect voters’ choices / continuity in office
Future population growth

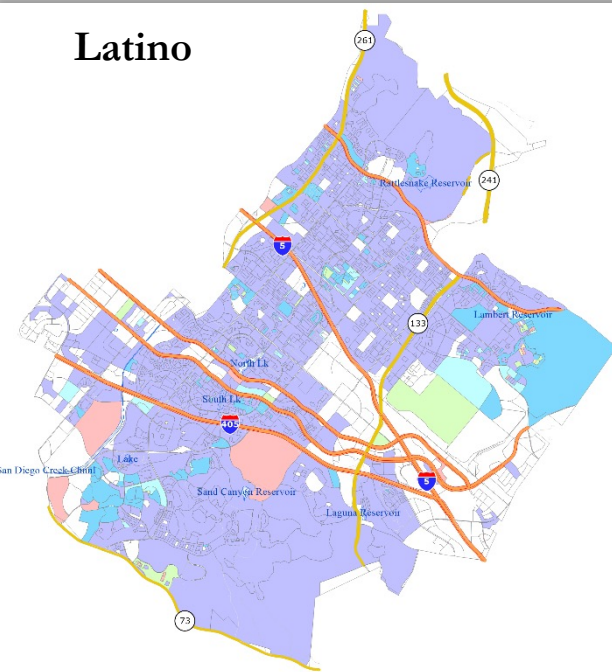
Demographic Summary

Each of **six** districts would contain about 51,326 people.

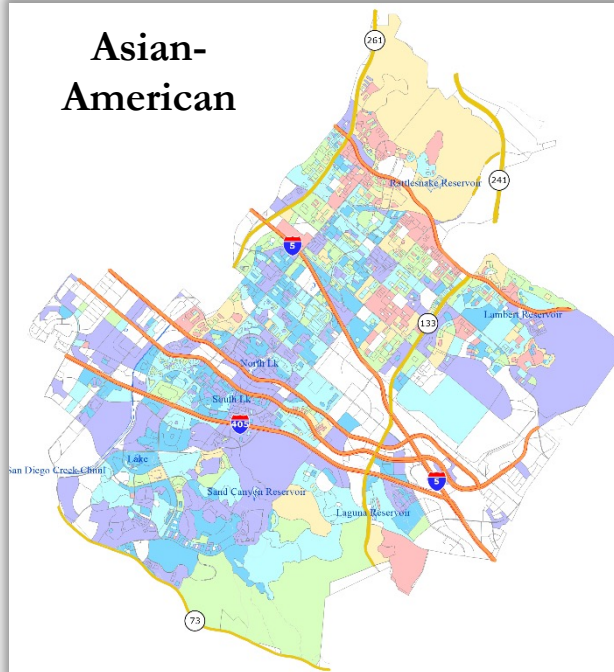
Category	Field	Total	Category	Field	Total
2020 Census	Total Population	307,958	Age	age0-19	26%
Total Pop.	Hispanic/Latino	12%		age20-60	59%
	NH White	34%		age60plus	14%
	NH Black	3%	Immigration	immigrants	39%
	NH Asian/Pac.Isl.	50%		naturalized	51%
	NH Native Amer.	0%	Language spoken at home	english	51%
Citizen Voting Age Pop	Total	166,406		spanish	7%
	Hisp	12%		asian-lang	29%
	NH White	47%		other lang	14%
	NH Black	2%	Language Fluency	Speaks Eng. "Less than Very Well"	16%
	Asian/Pac.Isl.	38%		Education (among those age 25+)	hs-grad
Native Amer.	1%	bachelor	38%		
Voter Registration (Nov 2020)	Total	148,676	graduatedegree		30%
	Latino est.	10%	Child in Household	child-under18	34%
	Spanish-Surnamed	9%	Pct of Pop. Age 16+	employed	66%
	Asian-Surnamed	27%		Household Income	income 0-25k
	Filipino-Surnamed	2%	income 25-50k		9%
	NH White est.	55%	income 50-75k		11%
	NH Black	2%	income 75-200k		42%
Voter Turnout (Nov 2020)	Total	127,745	income 200k-plus		24%
	Latino est.	10%	Housing Stats	single family	57%
	Spanish-Surnamed	9%		multi-family	43%
	Asian-Surnamed	26%		rented	56%
	Filipino-Surnamed	2%		owned	44%
	NH White est.	56%	Total population data from California's adjusted 2020 Census data. Citizen Voting Age Population, Age, Immigration, and other demographics from the 2017-2021 American Community Survey and 2016-2020 Special Tabulation 5-year data. Turnout and Registration data from California Statewide Database. "Latino" figures calculated by NDC using Census Bureau's Latino undercount by surname estimate.		
	NH Black	2%			
Voter Turnout (Nov 2018)	Total	85,460			
	Latino est.	10%			
	Spanish-Surnamed	9%			
	Asian-Surnamed	22%			
	Filipino-Surnamed	1%			
NH White est.	61%				
NH Black est.	2%				

Protected Class CVAP

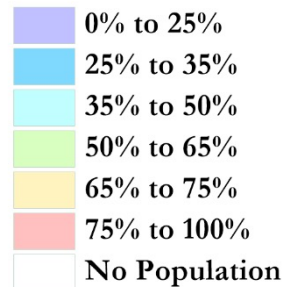
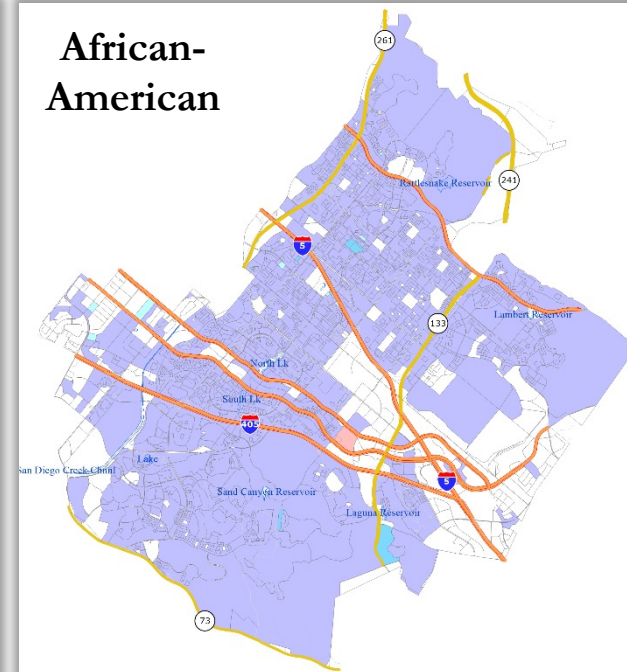
Latino



Asian-American



African-American



Defining Neighborhoods

1st Question: What is your neighborhood?

2nd Question: What are its geographic boundaries?

Examples of physical features defining a neighborhood boundary:

- ❑ Natural neighborhood dividing lines, such as highway or major roads, rivers, canals and/or hills
- ❑ Areas around parks or schools
- ❑ Other neighborhood landmarks

In the absence of public testimony, planning records and other similar documents may provide definition.



Beyond Neighborhoods: Defining Communities of Interest

1st Question: What defines your community?

- ❑ Geographic Area, plus
- ❑ Shared issue or characteristic
 - ❑ Shared social or economic interest
 - ❑ Impacted by city policies
- ❑ Tell us “your community’s story”

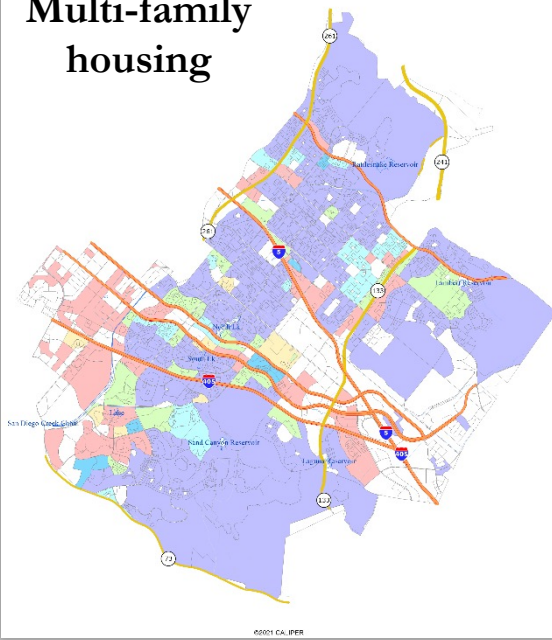
2nd Question: Would this community benefit from being “included within a single district for purposes of its effective and fair representation”?

- ❑ Or would it benefit more from having multiple representatives?

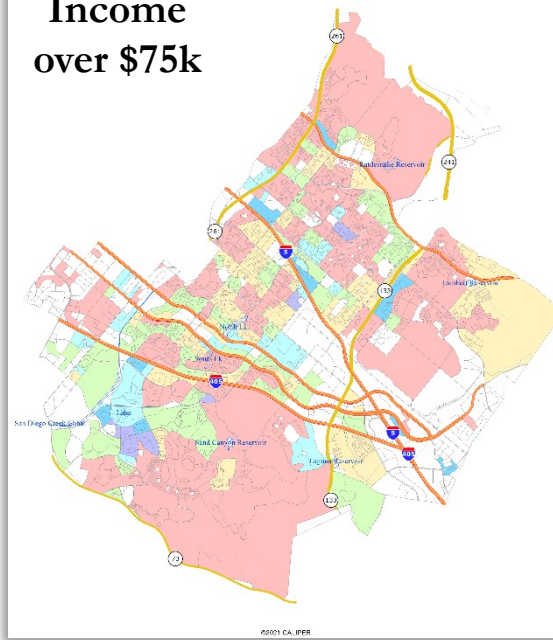
Definitions of Communities of Interest may not include relationships with political parties, incumbents, or political candidates.

Demographics and communities

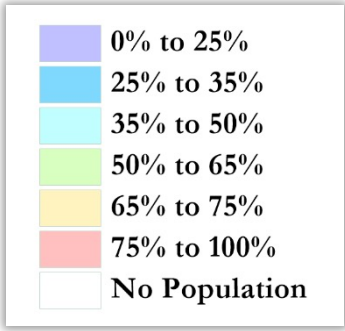
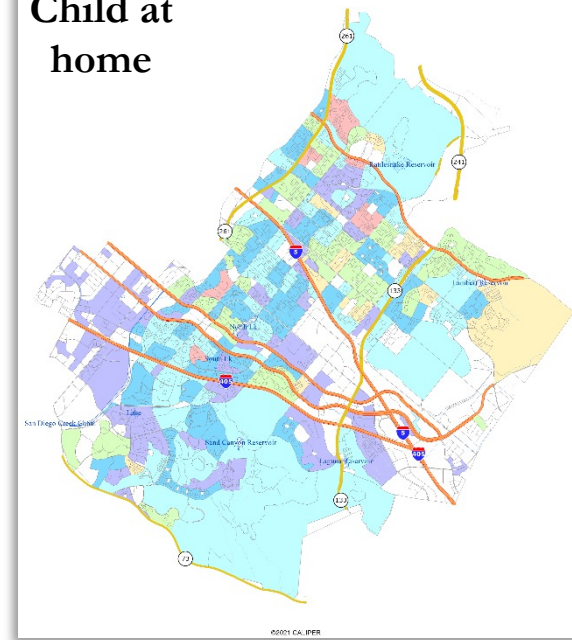
Multi-family housing



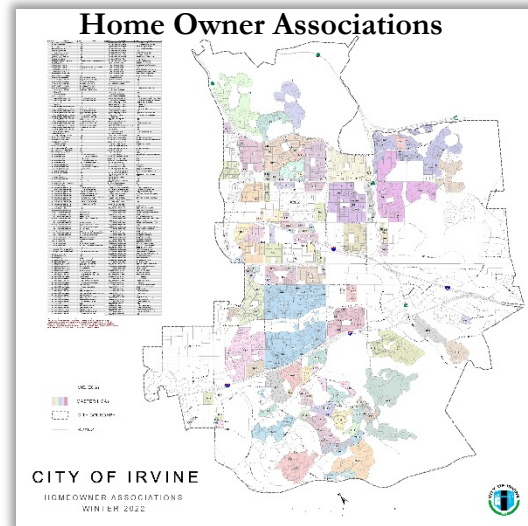
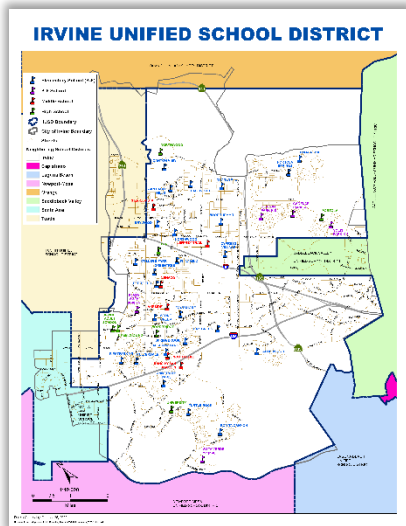
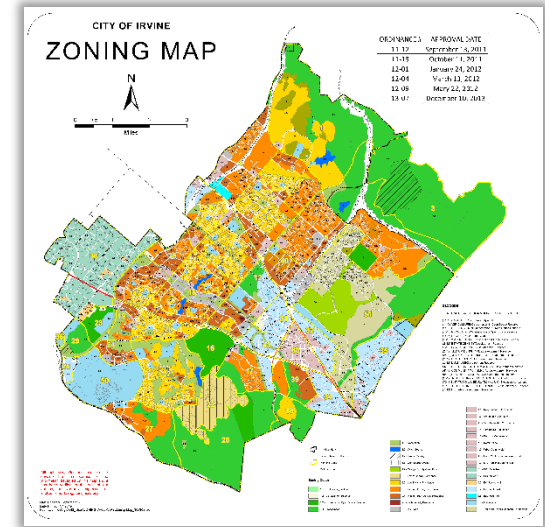
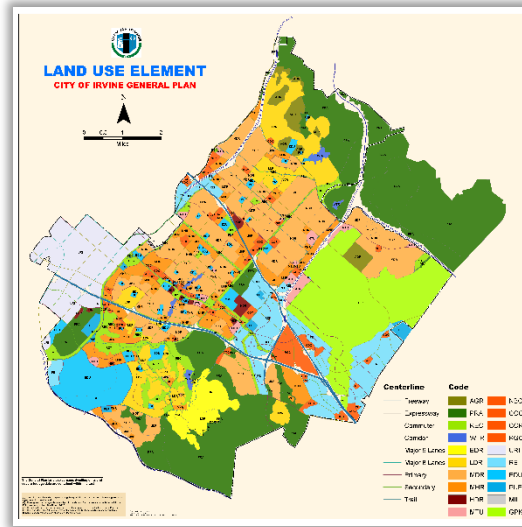
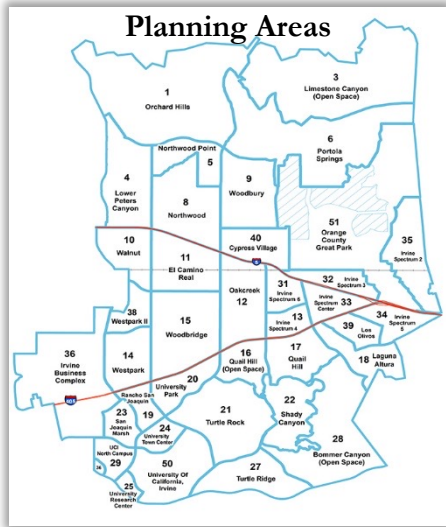
Income over \$75k



Child at home

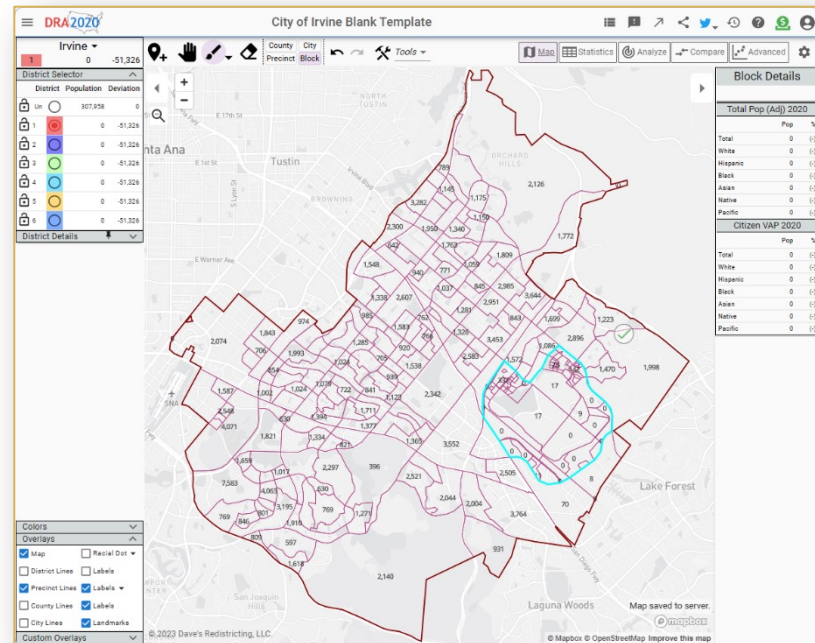
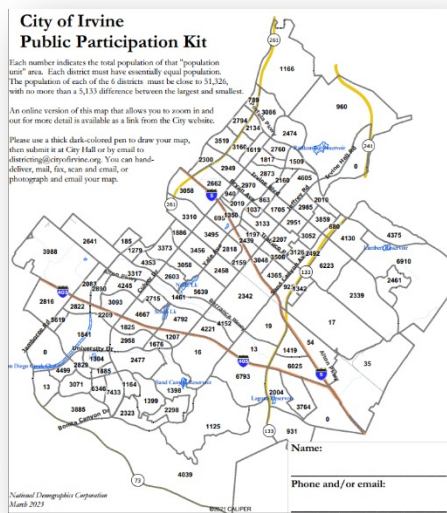


Possible Neighborhoods / Communities



Public Mapping and Map Review Tools

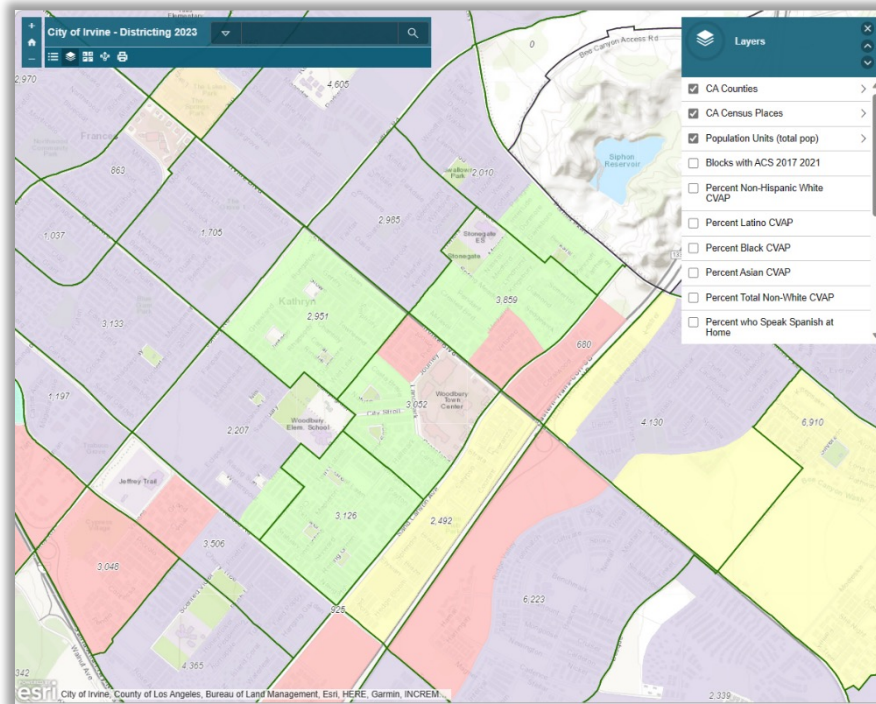
- ❑ Different tools for different purposes
- ❑ Different tools for different levels of technical skill and interest
 - ❑ Simple “review draft maps” tool
 - ❑ Paper-based simple “Draw a draft map” tools
 - ❑ Powerful, data-rich “Draw a draft map” online tool



Simple Viewing Tool

Very similar to Google Maps:

- ❑ Zoom in and out, or enter an address to see which district it is in
- ❑ Choose which overlays you wish to add (if any)
- ❑ Maps will be posted here when available



Simple Map Drawing Tool

Paper “Public Participation Kit”

- ❑ For those without internet access or who prefer paper
- ❑ Total Population Counts only – no demographic numbers

City of Irvine
Public Participation Kit

Each number indicates the total population of that "population unit" area. Each district must have essentially equal population. The population of each of the 6 districts must be close to 51,326, with no more than a 5,133 difference between the largest and smallest.

An online version of this map that allows you to zoom in and out for more detail is available as a link from the City website.

Please use a thick dark-colored pen to draw your map, then submit it at City Hall or by email to districting@cityofirvine.org. You can hand-deliver, mail, fax, scan and email, or photograph and email your map.

Name: _____

Phone and/or email: _____

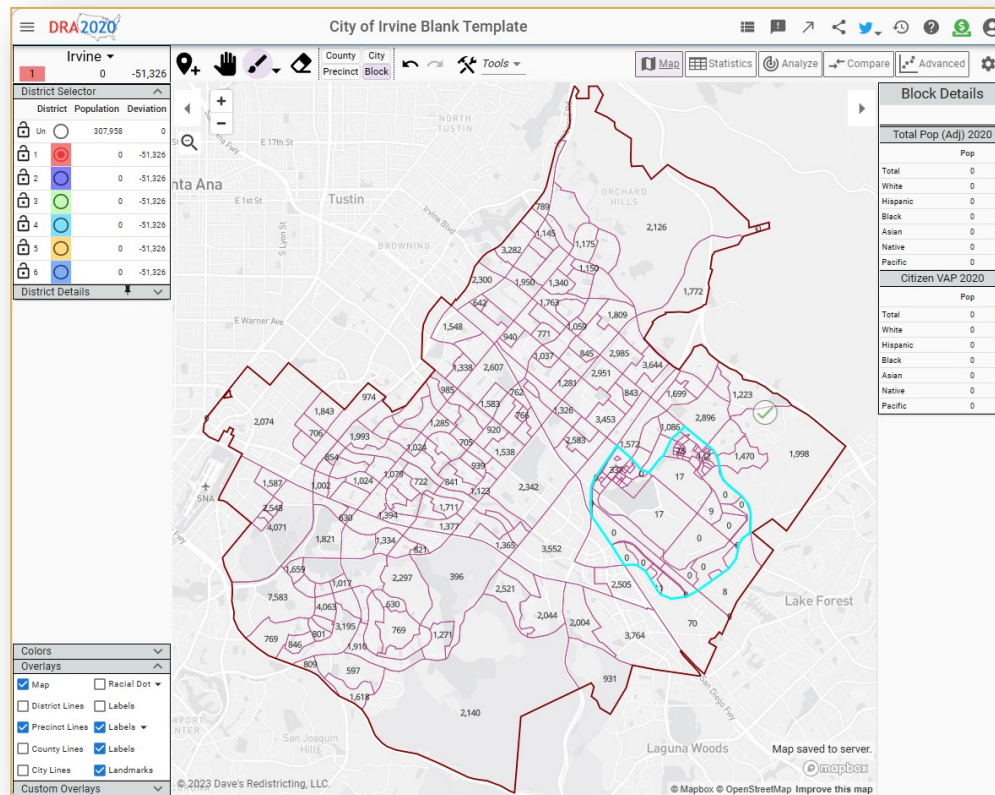
National Demographics Corporation
March 2023

©2021 CALIPER

Dave's Redistricting App (DRA)

Draw Your Community of Interest or a Full District Map

- Also includes simple district-mapping tool
- Email a link to your map to the City



Q&A With Your Hosts

Your Turn – Communities of Interest

- ❑ Who is part of your community?
- ❑ What are some meaningful places your community recognizes or gathers at?
- ❑ What are some common concerns you share with a group?
- ❑ What are some common cultural characteristics that unite a community?
- ❑ What are common work-related traits that bring a community together?
- ❑ What is significant about the physical environment?
- ❑ What areas benefit from staying together in a district?

Your thoughts will become part of the record.

Upcoming Workshops

Date & Time	Location
Saturday, April 22 2 pm	Heritage Park Library, 14361 Yale Ave
Wednesday, April 26 6 pm	Virtual forum over Zoom
Saturday, May 13 3 pm	South Coast Chinese Cultural Center, 9 Truman St
Saturday, May 27 2 pm	Lakeview Senior Center, 20 Lake Rd

Share Your Thoughts

Website

DrawIrvine.org

Phone

949-724-7575

Email

districting@cityofirvine.org